



## Modular Cooking Range Line 700XP Electric Tilting Bratt Pan 60lt with Duomat bottom

ITEM # \_\_\_\_\_  
MODEL # \_\_\_\_\_  
NAME # \_\_\_\_\_  
SIS # \_\_\_\_\_  
AIA # \_\_\_\_\_



371183 (E7BREHDNFX)

60-lt electric tilting braising  
pan with duomat cooking  
surface

### Short Form Specification

Item No. \_\_\_\_\_

Infrared heating elements positioned under the cooking surface. Duomat cooking surface for roasting, browning, stewing, preparation of sauces, sautéing, boiling and braising. Can be installed on cantilever systems. Mechanism to manually tilt the pan. Double-skinned lid in stainless steel. Cooking temperature can be set through thermostat. Exterior panels in stainless steel with Scotch Brite finish. Height adjustable feet in stainless steel. Right-angled side edges to allow flush-fitting junction between units.

### Main Features

- Infrared heating elements mounted below the cooking surface.
- Actual cooking temperature setting through adjustable thermostat.
- Manual tilting mechanism to facilitate pan emptying.
- Smooth large surfaces, easy access for cleaning.
- Unit to have stainless steel feet with height adjustment up to 50 mm.
- Working temperature can be set from 80 °C to 300 °C.

### Construction

- Cooking surface with Duomat bottom: a 10 mm-thick alloy obtained from the combination of 2 different stainless steels for better thermal stability and corrosion resistance.
- Lid in stainless steel to reduce heat dispersion.
- All pan internal surfaces round and polished for better hygiene.
- All exterior panels in Stainless Steel with Scotch Brite finishing.
- One piece pressed 1.5 mm work top in Stainless steel.
- Model has right-angled side edges to allow flush fitting joints between units, eliminating gaps and possible dirt traps.
- Usable capacity of the well 50 liters.
- IPX4 water resistance certification.

### Sustainability

- Heat-insulated: limited heat radiation and low energy consumption.



APPROVAL: \_\_\_\_\_



Experience the Excellence  
[www.electroluxprofessional.com](http://www.electroluxprofessional.com)

### Optional Accessories

- |   |            |                          |
|---|------------|--------------------------|
| • Flanged feet kit  | PNC 206136 | <input type="checkbox"/> |
| • Frontal kicking strip for concrete installation, 800mm    | PNC 206148 | <input type="checkbox"/> |
| • Frontal kicking strip for concrete installation, 1000mm   | PNC 206150 | <input type="checkbox"/> |
| • Frontal kicking strip for concrete installation, 1200mm   | PNC 206151 | <input type="checkbox"/> |
| • Frontal kicking strip for concrete installation, 1600mm   | PNC 206152 | <input type="checkbox"/> |
| • Frontal kicking strip, 800mm (not for refr-freezer base)  | PNC 206176 | <input type="checkbox"/> |
| • Frontal kicking strip, 1000mm (not for refr-freezer base) | PNC 206177 | <input type="checkbox"/> |
| • Frontal kicking strip, 1200mm (not for refr-freezer base) | PNC 206178 | <input type="checkbox"/> |
| • Frontal kicking strip, 1600mm (not for refr-freezer base) | PNC 206179 | <input type="checkbox"/> |
| • 4 feet for concrete installation                          | PNC 206210 | <input type="checkbox"/> |
| • Pair of side kicking strips                               | PNC 206249 | <input type="checkbox"/> |
| • Pair of side kicking strips for concrete installation     | PNC 206265 | <input type="checkbox"/> |
| • Chimney upstand, 1200mm                                   | PNC 206306 | <input type="checkbox"/> |
| • Rear paneling - 800mm (700/900)                           | PNC 206374 | <input type="checkbox"/> |
| • Rear paneling - 1000mm (700/900)                          | PNC 206375 | <input type="checkbox"/> |
| • Rear paneling - 1200mm (700/900)                          | PNC 206376 | <input type="checkbox"/> |
| • Trolley with lifting & removable tank                     | PNC 922403 | <input type="checkbox"/> |

### Recommended Detergents

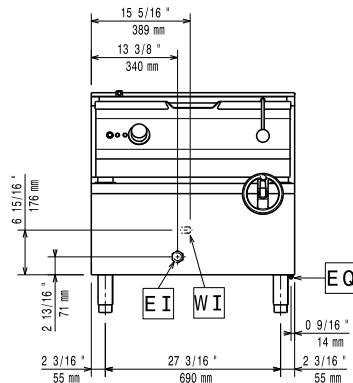
- |                    |            |                          |
|--------------------|------------|--------------------------|
| • *NOT TRANSLATED* | PNC 0S2292 | <input type="checkbox"/> |
|--------------------|------------|--------------------------|



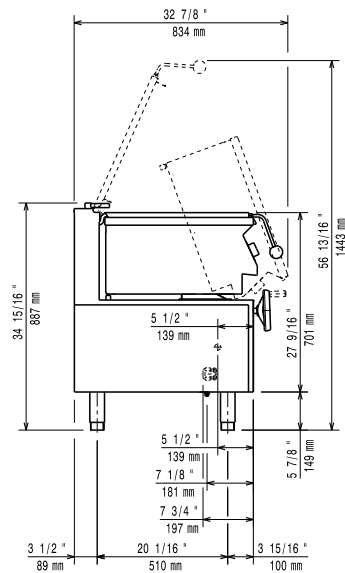
**Electrolux**  
PROFESSIONAL

## Modular Cooking Range Line 700XP Electric Tilting Bratt Pan 60lt with Duomat bottom

Front

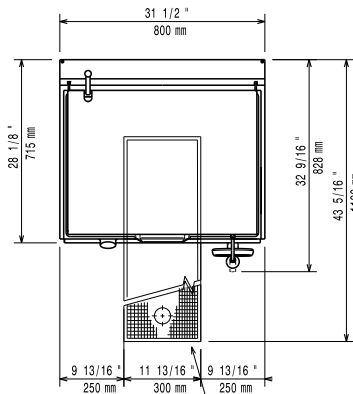


Side



CWI1 = Cold Water inlet 1 (cleaning)  
EI = Electrical inlet (power)

Top



### Electric

Supply voltage:

380-400 V/3N ph/50-60 Hz

Predisposed for:

Total Watts:

9.5 kW

### Key Information:

No clearance needed on rear sides of unit if wall is of non combustible type. If wall is combustible, minimum 50 mm wall clearance should be maintained.

Cooking Surface Depth: 410 mm

Cooking Surface Width: 680 mm

Cooking Surface Thickness: 10 mm

Cooking Well Height: 180 mm

Well Capacity, Max: 60 lt

Working Temperature MIN: 80 °C

Working Temperature MAX: 300 °C

External dimensions, Width: 800 mm

External dimensions, Depth: 730 mm

External dimensions, Height: 850 mm

Net weight: 105 kg

Shipping weight: 130 kg

Shipping height: 1080 mm

Shipping width: 820 mm

Shipping depth: 860 mm

Shipping volume: 0.76 m<sup>3</sup>

Certification group: EBP7M3



Modular Cooking Range Line  
700XP Electric Tilting Bratt Pan 60lt with Duomat bottom

The company reserves the right to make modifications to the products without prior notice. All information correct at time of printing.

2025.06.23